



Leaf Spring Pivot Bushing Assembly Instructions

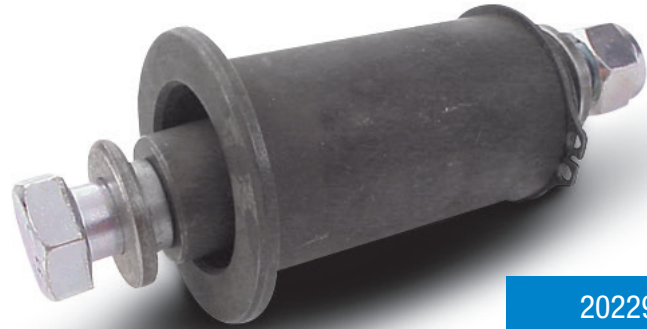
This unit is designed to replace the bushing in the front spring eye on Chrysler type racing springs (both in mono lead and multileaf). The purpose of the part is to relieve any bind or restriction on the movement of the spring when responding to various loads.

ASSEMBLY INSTRUCTIONS

- Remove front spring eye bushings and clean out any rust or scale from inside of spring eye.
- Push outer pivot sleeve into front spring eye from left side of spring (when looking from rear of car). Due to spring manufacturing tolerances for front eye dimensions, the outer pivot sleeve may need anything from a rubber mallet to a small press to install.
- Install snap ring on pivot sleeve.
- Coat inside of pivot sleeve with good load bearing grease such as wheel bearing lubricant.
- Grease the pivot ball and install inside pivot sleeve. The small end of the pivot ball will be on the same side of the spring as the snap ring.
- Place the spring in the front mounts. Install the stepped bushings into the bracket bolt holes. Secure the stepped bushings with two 1/2" welds each. (If mount brackets are less than 3/16" thick the stepped bushings will need to be cut down so that the step is the same thickness as the mounting plate.)
- Put the 1/2 x 4-1/2 bolt through the entire assembly and tighten the lock nut.
- Assemble the rest of the suspension.

RECOMMENDED MAINTENANCE

Remove the pivot ball, clean and re-pack with grease and re-install every 3 to 4 race nights (More often in extremely dusty or abrasive conditions).



20229P



AFCO RACING

P.O. Box 548,
Boonville, IN 47601

(800)-632-2320
www.AFCOracing.com

LIT-253 REV C
Copyright 2021 - AFCO Performance Group